

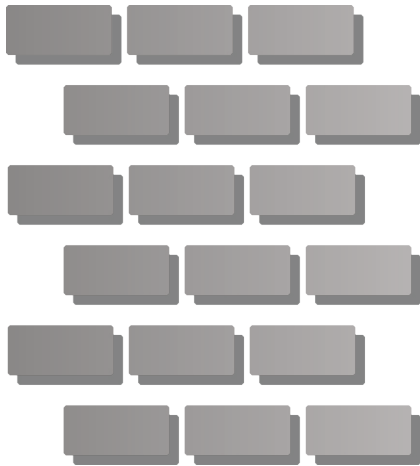


## INTRODUCTION

Type **ESD-WL** Series Wall Lining System is used to provide wall or ceiling absorptive lining panels.

The Type **ESD-WL** Wall Lining System can be supplied in 50mm, 75mm or 100mm thicknesses, depending on the specific absorption characteristics.

All Wall Lining Systems are designed to suit your individual project, and our Team of Sales Engineers can assist with the design of the acoustic treatment for the optimum product selection.



## DESIGN AND MANUFACTURE

The **ESD-WL** Series Wall Lining System is designed and fabricated to suit individual projects, and will take into account the specific sound absorption requirements.

We can also calculate the required area of wall or ceiling lining's based upon the absorption co-efficient, to give the desired reduction.

This calculation can be combined with measuring or calculating the room or area reverberation time, and proposing an ideal level for that room type.

The **ESD-WL** Wall Lining system is ideally fixed to either Concrete, Brick or Plasterboard substrates, although it is possible to fix to metal or other surfaces.





## PERFORMANCE DATA

Type **ESD-WL** Acoustic Wall Lining System has the following Acoustic Performance.

### Random Incidence Absorption at Octave Band Centre

Panel Type	63Hz	125Hz	250Hz	500Hz	1000Hz	2000Hz	4000Hz	8000Hz
ESD50	0.15	0.20	0.35	0.65	0.80	0.90	0.85	0.70
ESD75	0.21	0.26	0.43	0.78	0.85	0.90	0.86	0.76
ESD100	0.28	0.35	0.53	0.94	0.95	0.90	0.88	0.82

## PANEL DESCRIPTION

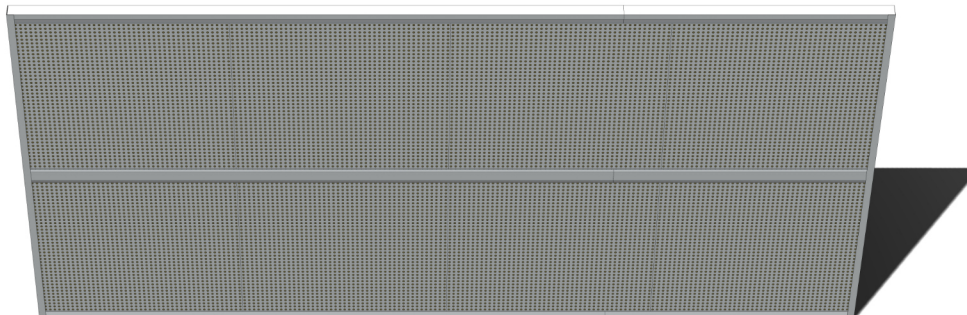
Type **ESD-WL** Acoustic Wall Lining System nomenclature.

- **ESD50** - 50mm Thick Acoustic Wall Lining Panel
- **ESD75** - 75mm Thick Acoustic Wall Lining Panel
- **ESD100** - 100mm Thick Acoustic Wall Lining Panel

## WEIGHTS

Type **ESD-WL** Acoustic Wall Lining System has the following weights per square metre.

Panel Type	Weight (m <sup>2</sup> in Kg)
ESD50	26
ESD75	28
ESD100	30

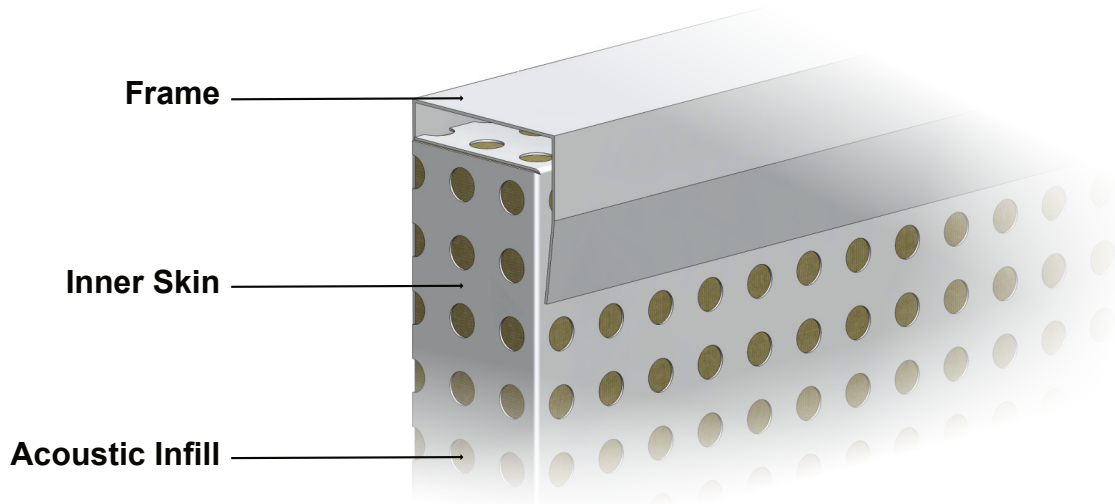




## TYPICAL SPECIFICATION

### Acoustic Wall Lining.

Manufacturer:	Conabeare Acoustics Limited - <a href="tel:01189303650">0118 930 3650</a>
Panel Type:	<b>ESD-WL100/75/50</b> Absorptive Wall Lining System.
Inner Skin:	0.7mm expanded pre-galvanised steel skin having minimum 30% free area.
Acoustic Infill:	45kg/m <sup>3</sup> density mineral wool retained behind glass fibre tissue facing.
Frame:	1.2mm pre-galvanised pressed steel channels and 'J' sections.
Finish:	Mill Finish as Standard.
Description:	Fabricated Steel Acoustic Panel System comprising pre-galvanised steel components throughout. Assembly using mechanical or spot welded concealed fixings. The panels themselves are constructed from 50, 75 or 100mm thick mineral wool with a white glass fibre tissue facing. The panels then protected with a perforated pre-galvanised steel skin which is folded back on either the two vertical edges to ensure panel stiffness or all four edges for a more robust panel. The framing consists of pre-galvanised pressed steel top, middle and bottom channels which are fixed horizontally and at ends of runs or to frame doors and windows etc.



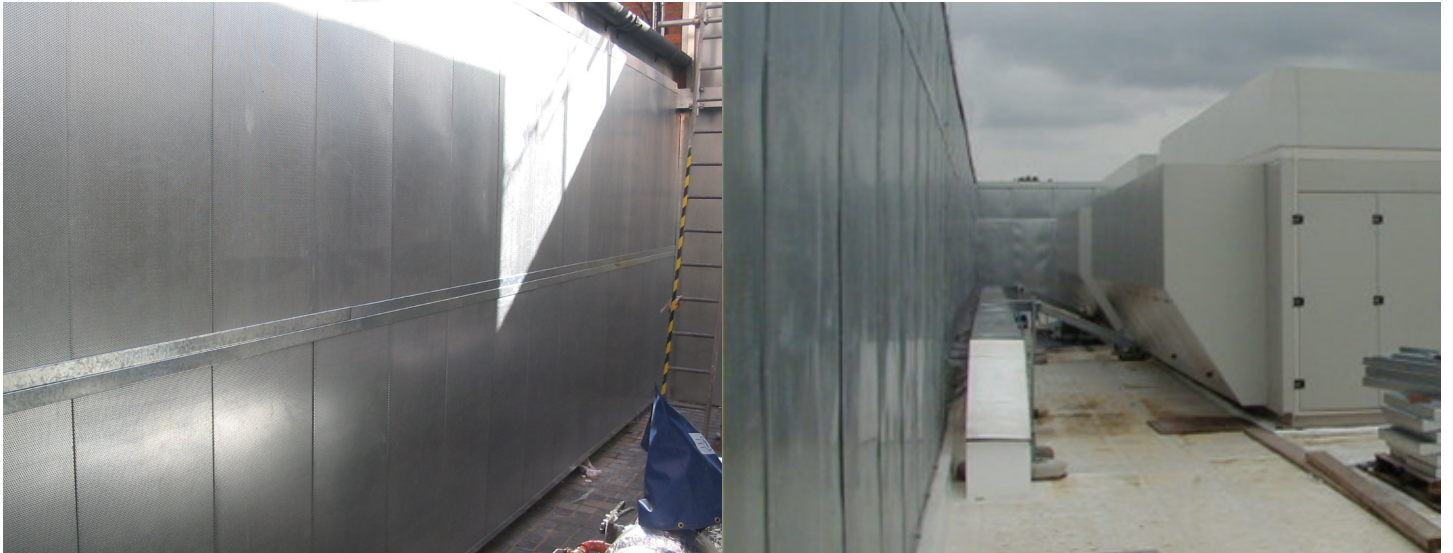
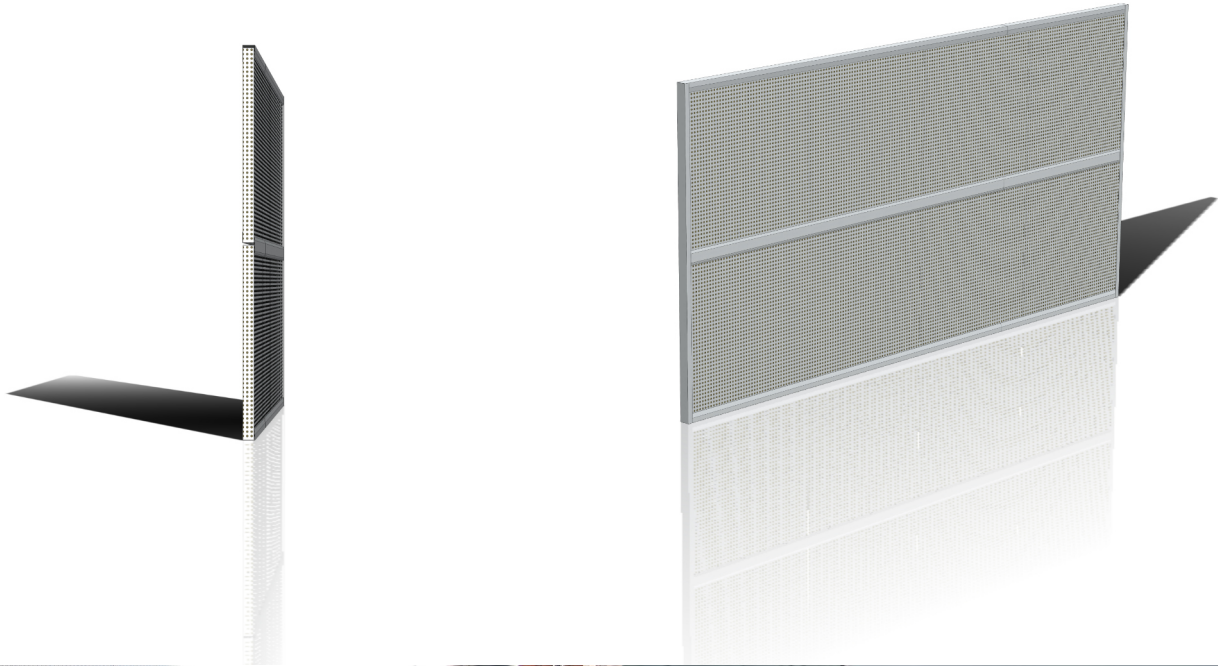
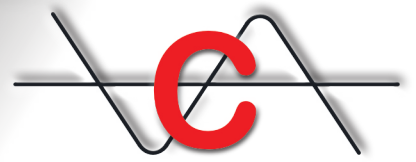
## AVAILABLE OPTIONS

- Polyester Powder Coat to a Non-standard RAL Colour.
- Polyester Powder Coat to a RAL Metallic Colour.
- Stainless Steel Fabrication
- Aluminium Fabrication
- Supports for Surface Mounted Services

## AVAILABLE SIZES

Panels are supplied in Modular Format with sizes of 600mm wide x 1200mm high to suit acoustic media slab sizes. This reduces both manufacture and install times and costs, and prevents mineral wool joints behind the panels.

The panels are supplied with horizontal joiner sections to give a large absorptive area.



## ENVIRONMENTAL CONSIDERATIONS

All items are produced in the UK from UK sourced suppliers and are constructed from recyclable materials throughout.

All items are supplied to ensure minimal handling, transportation and waste. As such all raw materials are ordered on a project by project basis to facilitate this.

The panels are supplied in stackable modules to enable any transportation to be fully utilised.

All packaging is kept to a minimum and mainly consists of recyclable cardboard or bubble wrap.

## Wall Lining System - ESD-WL

11 Chiltern Enterprise Centre, Station Road, Theale, Berkshire. RG7 4AA.



Telephone [0118 930 3650](tel:01189303650)



[sales@conabeare.co.uk](mailto:sales@conabeare.co.uk)



Facsimile [0118 930 3912](tel:01189303912)



[www.conabeare.co.uk](http://www.conabeare.co.uk)

