



Corus Colors

# Colorcoat HPS200<sup>®</sup>

The most specified pre-finished steel for roof and wall cladding





CORUS

# Colorcoat HPS200<sup>®</sup>

## Even Better Performance. Guaranteed.

Colorcoat HPS200<sup>®</sup> is the most specified pre-finished steel for roof and wall cladding in Europe. Constantly evolving, it has again been enhanced to reflect both the market's changing needs and advancements in coating technology. Colorcoat HPS200<sup>®</sup> now offers the ultimate in durability and guaranteed performance.

- Maintenance free for up to 30 years, reducing building life cycle costs and unnecessary roof visits.
- Now available in new metallic shades providing real depth of finish and distinctive sparkle.
- Comprehensive Confidex<sup>®</sup> guarantee for total peace of mind, now up to 30 years for roofs as well as walls.
- Optimised Galvalloy<sup>®</sup> metallic coating for ultimate corrosion resistance and cut edge protection.
- Enhanced coating for even better colour and gloss retention over the life of the product.
- Supplied with the Scintilla<sup>®</sup> emboss as a mark of authenticity.
- Eco-designed for reduced environmental impact, providing a long-term sustainable building envelope solution.

**For complete peace of mind, always specify Colorcoat HPS200<sup>®</sup> with the market-leading Confidex<sup>®</sup> Guarantee.**

**Colorcoat<sup>®</sup>**  
Building confidence

# Colorcoat HPS200®



White **CD1** 00E55



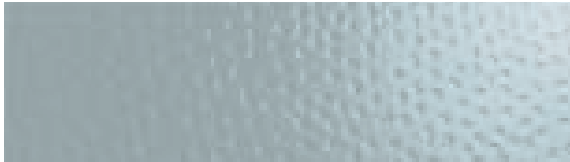
Hamlet **CD1** RAL 9002



Albatross **CD1** 18B17



Goosewing Grey **CD1** 10A05



Wedgewood Blue **CD1** 18C37



Merlin Grey **CD1** 18B25



Black **CD1** 00E53



Honesty **CD1** 10C31



Meadowland **CD1** 12B17



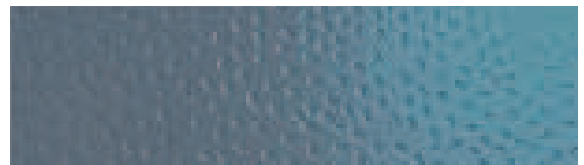
Mushroom **CD1** 10B19



Svelte Grey **CD1** 10B23



Solent Blue **CD2** 18E53



Ocean Blue **CD2** 18C39



Sargasso **CD2** RAL 5003

## Metallic Shades



Sirius **CD2**



Orion **CD2**

### Notes

1. The standard colour references shown above are the nearest equivalents.
2. The printed colours shown for Colorcoat HPS200® are for guidance only.
3. For a true representation of colour and effect, please obtain product samples from the Colorcoat Connection® helpline.
4. If an exact match between components and Colorcoat HPS200® is essential, this is best achieved by matching to the actual cladding delivered to site.

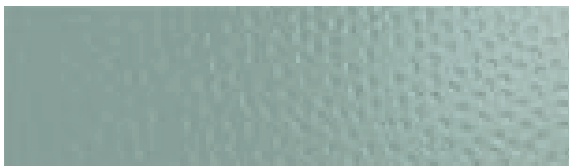
# Colorcoat HPS200®



Bamboo **CD1** 08C35



Moorland Green **CD1** 12B21



Jade **CD2** 14C37



Heritage Green **CD2** RAL 6002



Olive Green **CD1** 12B27



Terracotta **CD2** 04C39



Vandyke Brown **CD2** 08B29



Aztec Yellow **CD2** 10E55



Saffron **CD2** 08E53



Tangerine Orange **CD2** 06E53



Poppy Red **CD2** 04E53



Petra **CD2** 04D44



Burano **CD2** RAL 3004

## Repertoire®



Repertoire® Colour Consultancy – offering you and your clients an unlimited colour choice for your buildings.  
Click online at [www.colorcoat-online.com/repertoire](http://www.colorcoat-online.com/repertoire) for more details.

# Product Leadership

## Colorcoat® Reassurance

The Colorcoat® brand provides the recognised mark of quality and metal envelope expertise exclusively from Corus. Encompassing 40 years of innovation, manufacturing excellence and strict test regimes, Colorcoat® provides a range of pre-finished steel products supported by services such as transferable guarantees and colour matching, and expert advice and guidance on all aspects of metal envelope design.

Colorcoat Connection® helpline (+44 (0)1244 892434), colorcoat-online.com and the Colorcoat® Building Manual all provide a comprehensive source of support and information.

## Maintenance Free for up to 30 Years

Because of its enhanced performance and durability, Colorcoat HPS200® is now maintenance free for its Confidex® Guarantee Period, the first of its kind. This means, Colorcoat HPS200® does not need to be inspected annually to maintain the validity of the Confidex® Guarantee.

Over a period of up to 30 years this provides clear benefits in terms of reduced life cycle costs, and has positive implications for safety. Reducing unnecessary roof visits is key to the latest Health and Safety Executive thinking, and the 'Working at Height Regulations' (2005).

The latest developments in Colorcoat HPS200® strongly support this and when combined with best maintenance practice will repay the careful building owner with the best possible performance in terms of appearance, durability and lifespan for up to 60 years.

### Specification

To secure the peace of mind that comes from a rigorously manufactured and tested product from Corus, please ensure Colorcoat® as well as the individual product name is specified e.g. Corus Colorcoat HPS200® with Galvalloy® hot-dip metallic coated steel grade S220GD+ZA265.

## Metallic Shades

Colorcoat HPS200® is now available in two popular metallic shades, Sirius and Orion, backed up by the market-leading Confidex® Guarantee for up to 25 years. The advanced paint formulation and unique Scintilla® emboss combine to provide real depth of metallic effect and distinctive sparkle delivered in a durable and robust product.



## Repertoire® Colour Consultancy

Corus has established an expert team that can provide a wide range of advice and guidance on colours and colour strategies using standard Colorcoat shades, as well as discussing individual bespoke colour requirements.

Corus can match almost any shade from physical swatches, commonly used references such as RAL, NCS and British Standards through to the more unusual standards.

To benefit from the Repertoire® Colour Consultancy, contact the Colorcoat Connection® helpline or visit [www.colorcoat-online.com/repertoire](http://www.colorcoat-online.com/repertoire)

## Scintilla® Emboss

The unique Scintilla® emboss provides a mark of authenticity with superior appearance, producing a more subtle visual effect than traditional leather grain, varying in intensity depending on the direction of the light.



# Peace of Mind

## Confidex® Guarantee

Confidex® offers the most comprehensive guarantee available for pre-finished steels and can now provide peace of mind for up to 30 years on both roof and walls. Specifically Confidex®:

- Covers cut edges for the entirety of the minimum Confidex® Guarantee Period.
- Uses two simple colour performance bandings without reductions for orientation.
- Allows a single guaranteed figure to be given to the whole building envelope.
- Does not distinguish between different roof pitches and provides cover for roof pitches down to 1°.
- Is offered directly to the building owner, unlike most other guarantees on the market.
- Has a quick and simple registration form.
- Is fully transferable should the building ownership change.
- Helps to reduce the level of risk for each part of the supply chain.
- On production of the certificate, can be used to secure a discounted Structural Building Guarantee from Bland Bankart (independent insurance broker).

## Compass® Durability Index

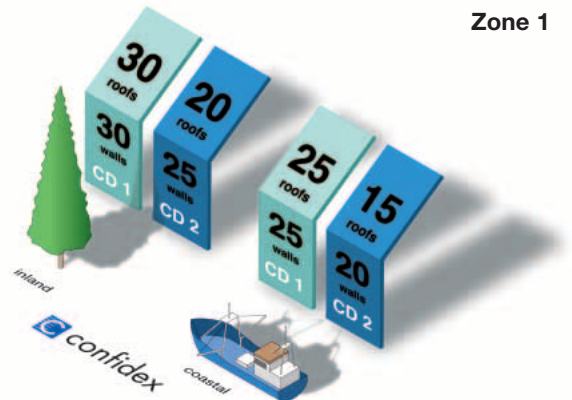
The Compass® Durability Index is the Corus performance rating system for Colorcoat HPS200® colours. Based on 40 years research and development, Compass® greatly simplifies the selection of colours for a building by having only two durability categories (CD1 or CD2).

It allows the unification of the performance for all cladding applications on a building. The CD rating is shown below each colour sample.

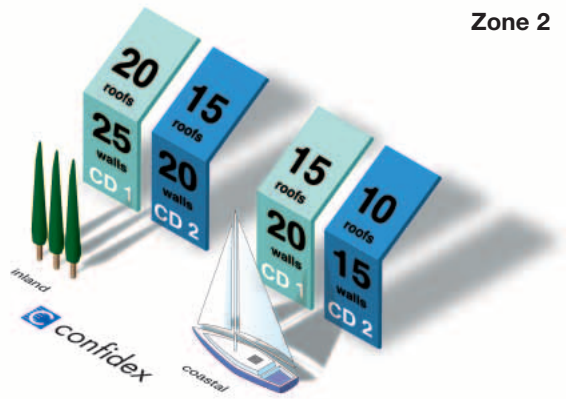
### Notes

1. Figures under the Coastal heading are for buildings within 1km of any coast.
2. The Confidex® Guarantee Period begins from the date the material is delivered to the site, but not more than 18 months after manufacture by Corus.
3. Full terms and conditions of the Confidex® Guarantee are on the reverse of the application form, which is available from Corus.

Zone 1



Zone 2



Yellow Northern Europe – Zone 1

Orange Southern Europe – Zone 2

4. Soffits are excluded.

5. Because the surfaces of flashings can emulate roofs, walls or both, their durability is determined by the function they perform. If a single flashing emulates both a roof and a wall, the entire flashing is assumed to have the durability of a roof. To achieve the best performance, both the design of flashings and their application to the building should follow Corus recommendations. In particular, all longitudinal cut edges should be welted or lock rolled.

# Performance

## Designed to Perform

Colorcoat HPS200® has been put through a rigorous laboratory and real world testing programme to validate its performance in different conditions. This superior performance has been successfully proven on thousands of buildings worldwide. A detailed Product Health and Safety Data Sheet, Environmental Product Declaration and Life Cycle Assessment are all available on request.

## Eco Design

Colorcoat HPS200® has been enhanced using eco design principles. These are aimed at minimising the environmental impact of the product from raw material production through to manufacture, utilisation and end of life.

The focus for Colorcoat HPS200® has been on using raw materials with a lower environmental impact than that required by current and proposed legislation and improving the durability and long-term performance of the product thus reducing life cycle costs.

## Typical Properties

Colorcoat® Product		HPS200®
Nominal Organic Coating Thickness	(µm)	200
Specular gloss (60°)	%	20-40
Scratch resistance	(g)	>3500
Abrasion resistance (Taber)	(mg)	10-12
Flexibility: Min. bend dia.	(T)	0T@16°C; 2T@0°C
Reverse impact	(j)	18
Adhesion (cross hatch)	(%)	100
Corrosion resistance: Salt spray	(h)	1000
Humidity	(h)	1000
UV Resistance		Excellent

### General notes

The figures contained in this table are typical properties and do not constitute a specification. These figures relate to the topcoat. For details on test methods see [www.colorcoat-online.com](http://www.colorcoat-online.com)

## Agrément Certificate

The long-term performance of Colorcoat HPS200® has been recognised within BBA certificate 91/2717 as “coating and metal treatment will protect the steel substrate against corrosion for a period in excess of 40 years in normal industrial, urban, suburban and rural environments.”

## Fire Performance

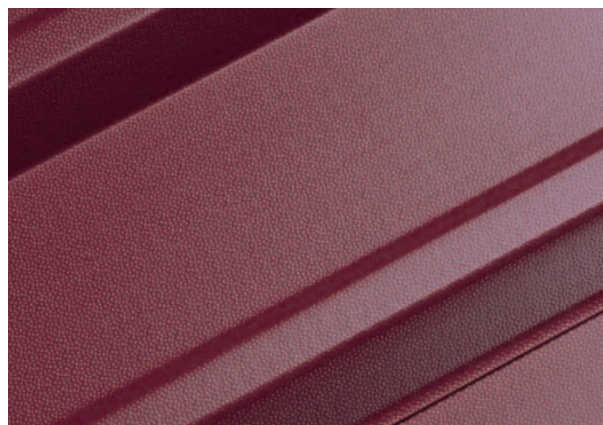
### Reaction to Fire

Colorcoat HPS200® meets the Class 0 requirements of the Building Regulations for the UK, 2000 as well as the M1 requirements of NF P 92-507 for France and the B1 requirements of DIN4102-1 for Germany

### Resistance to Fire

Colorcoat HPS200® when used as part of a roof cladding system, will achieve a class AA performance rating, when tested to BS476 part 3 1958.

European Standards for resistance and reaction to fire will progressively supersede national standards. The implementation of the European Standards will vary from one country to another. For more information please contact Colorcoat Connection® helpline.



## Colour Matching

As the printing technology used to represent our standard colours cannot convey the actual colour and effect, metal hand samples are available on request.

If tonal consistency is critical, all cladding for a single elevation should come from the same production batch. The metallic effect of Colorcoat HPS200® in Sirius and Orion exhibits a degree of directionality.



# Corrosion Resistance

## Product Performance

The durability of Colorcoat HPS200® is derived from its metallic coated substrate and the high performing pre-treatment, primer and topcoat, all brought together in a carefully controlled manufacturing process to deliver the very best quality and performance.

Galvalloy® is a hot-dip metallic coating on steel based upon a 95%zinc: 5% aluminium eutectic alloy, produced to BS EN 10326: 2004.

The combination of zinc and aluminium in these carefully developed proportions offers the ideal mix of both barrier and sacrificial corrosion protection, beyond that of standard hot-dip galvanised coatings.

This translates into a substrate that offers superior corrosion resistance and cut edge protection and supports Colorcoat HPS200® best in class product performance.

## Test Conditions

Samples with cut edges and a scribed cross to simulate a scratch were put through a gruelling 1000-hour prohesion test. This involved cyclic wetting with an aggressive saline fog containing both ammonium sulphate and sodium chloride for one hour at room temperature, followed by drying for an hour at 35°C – repeated for a total of 1000 hours. The benefits of Galvalloy® substrate can clearly be seen.

Further optimisation of the Galvalloy® metallic coating has been possible after extensive research into the corrosion mechanisms of pre-finished steel. Controlled increases to the coating thickness and key process parameters has resulted in a product with even greater cut-edge corrosion resistance, supporting extended guarantee periods for maintenance free Colorcoat HPS200®.



**Colorcoat HPS200® on Galvalloy®**



**Proprietary plastisol on HDG**

Test conducted at Corus laboratory (accredited to ISO9001 by LRQA) in accordance with ASTM G85 Annex 5



# Sunlight Resistance

## Product Performance

The excellent colour and gloss retention of Colorcoat HPS200® is derived from its high performing topcoat, developed exclusively by Corus with leading paint suppliers.

The most destructive light to materials whether human skin, plastics or organic coatings is ultraviolet (UV) light. This light is directly absorbed at the atomic and molecular level within materials, leading to the breaking of chemical bonds. For all organic coatings, this eventually leads to a loss of gloss, fading, chalking, brittleness and eventually loss of coating adhesion.

However, Colorcoat HPS200® has been developed to resist the effects of sunlight. Enhancing the topcoat technology and pigmentation has resulted in a product greatly exceeding the typical performance of a proprietary plastisol, and equalling that of other coating types.

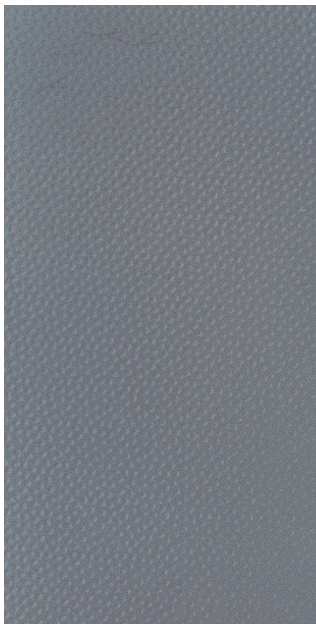
## Test Conditions

A number of different tests that expose samples to a combination of artificial UV light and condensation can be used. However, for development purposes we have chosen a particularly aggressive test regime to highlight the improved performance.

This involved cyclic exposure to UV-B light for eight hours at an elevated temperature of 65°C followed by exposure to water condensation for a further four hours at a temperature of 45°C – repeated for a total of 1000 light hours.

Small scores made on the section of the surface exposed to the light indicate where periodic checks of coating adhesion have also been made.

The benefits of Colorcoat HPS200® and the enhanced coating technology can be seen in the form of significantly improved colour and gloss retention and coating integrity.



**Colorcoat HPS200® on Galvalloy®**



**Proprietary plastisol on HDG**

Test conducted at supplier laboratory (accredited by UKAS) in accordance with ASTM G154

# www.colorcoat-online.com

## **Trademarks of Corus Group plc**

Albatross, Burano, Colorcoat, Colorcoat Connection, Compass, Confidex, Galvalloy, Hamlet, Heritage Green, Meadowland, Moorland Green, Honesty, HPS200, Orion, Petra, Repertoire, Sargasso, Scintilla, Sirius and Solent Blue are trademarks of Corus.

Care has been taken to ensure that the contents of this publication are accurate, but Corus Group plc and its subsidiary companies do not accept responsibility for errors or for information that is found to be misleading. Suggestions for, or descriptions of, the end use or application of products or methods of working are for information only and Corus Group plc and its subsidiaries accept no liability in respect thereof.

Before using products supplied or manufactured by Corus Group plc and its subsidiaries the customer should satisfy themselves of their suitability.

Copyright 2007 Corus.

## **Sales Contact Details**

Corus Colors  
Shotton Works  
Deeside  
Flintshire  
CH5 2NH  
United Kingdom

## **Colorcoat Connection helpline**

T: +44 (0)1244 892434  
F: +44 (0)1244 836134  
E: [colorcoat.connection@corusgroup.com](mailto:colorcoat.connection@corusgroup.com)