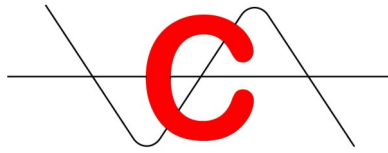


## INTRODUCTION

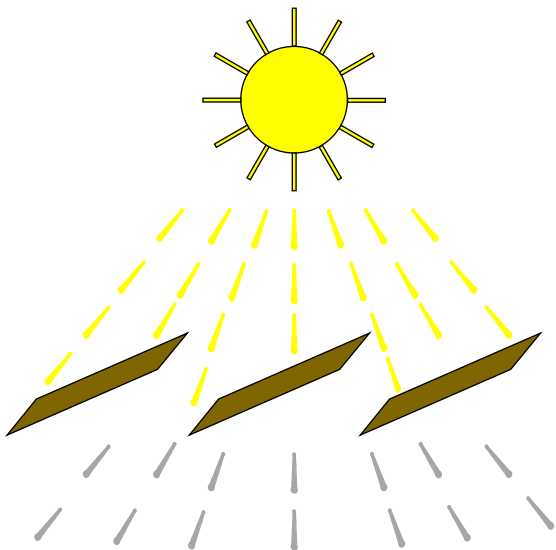


The **ASK-BS-Louvre** System has been developed to give a competitively priced sun shade with a visually pleasing aesthetic appearance complete with a flexible design to incorporate 50mm, 75mm or 100mm blades.

The System enhances the external appearance of new and existing buildings, whilst controlling solar heat gain to create a comfortable internal environment.

The ASK-BS-Louvre Series can be supplied in various different formats to suit particular applications, with different finishes and options as required.

All of our **ASK-BS-Louvre's** are designed to suit your individual project, and our Team of Sales Engineers can assist with the design of the louvre package for the optimum product selection.



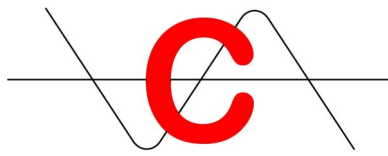
## DESIGN AND MANUFACTURE

The **ASK-BS-Louvre** Brise Soleil system can be supplied in two different Formats. Either Site Assembled Continuous Line or Factory Assembled Modular Formats, both of which utilise aluminium components throughout.

The Continuous Line Format Louvre is an easily installed component based system, using our unique clip together system which eliminates the need for any mechanical fixings, making it quick to install and efficient to transport.

The design of the system enables the louvre to be easily manipulated so that site tolerances and obstructions can be overcome with ease, and hence reducing time and cost implications.

# CONABEARE ACOUSTICS



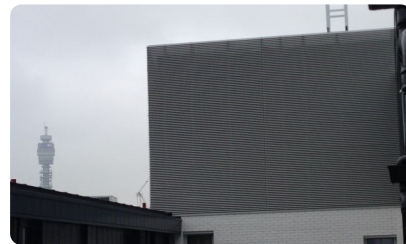
## TYPICAL SPECIFICATION

### ASK-BS-Louvre Continuous Line Brise Soleil.

|               |   |
|---------------|---|
| Manufacturer: | Conabeare Acoustics Limited - <a href="tel:01189303650">0118 930 3650</a>   |
| Product Type: | <b>ASK-BS-Louvre-50, ASK-BS-Louvre-75, AKS-BS-Louvre-100.</b>   |
| Materials:    | Extruded Aluminium Blades, Clips and Mullions to BS4174 - Grade 6063-T6.  |
| Frame:        | Extruded Aluminium Arms fixed to bespoke brackets.  |
| Pitch:        | Variable pitch with 60mm deep blade on 35mm mullion on 100mm arms– Pitches Include 50mm, 60m, 700mm,  |
| Finish:       | Mill Finish as Standard.  |
| Description:  | Extruded Aluminium Aerofoil Brise Soleil System comprising extruded aluminium components throughout. blades to be fitted using clip-fit system to alleviate the need for mechanical fixings for blades or clips. Aerofoil system to be assembled on site from pre-finished components to suit structural opening. |

## AVAILABLE OPTIONS

- Polyester Powder Coat to a Standard RAL Colour.
- Polyester Powder Coat to a RAL Metallic Colour.
- Anodised Finish to a Standard Colour or SAA25.
- Steelwork Brackets
- Corners
- Bespoke Nosing's



## AVAILABLE SIZES

**ASK-BS-Louvre's** are supplied in either Modular Format with permitted sizes of up to 2000mm wide x 2000mm high which will be Powder Coated after assembly, or Continuous Line Format with sizes from 1000mm wide x 500mm high up to any required size with blades arms and nosing frames finished prior to assembly.

Continuous Line Louvre Blades are generally supplied in 4000mm lengths with mullions positioned at 1000mm centres so that blades are joined at mullion centres.

## ENVIRONMENTAL CONSIDERATIONS

All items are produced in the UK from UK sourced suppliers and are constructed from recyclable materials throughout.

All items are supplied to ensure minimal handling, transportation and waste and as such all extrusions are ordered on a project by project basis to facilitate this.

All packaging is kept to a minimum and mainly consists of recyclable cardboard, bubble wrap or re-usable containers.

# CONABEARE ACOUSTICS